

PRODUCT INFORMATION PACKET

marathon[®]
Motors

Model No: 215TCDW7003
Catalog No: Z308
10/15,3600/3600,DPAO,215TZ,1/60/230
Crop Dryer



Regal and Marathon are trademarks of Regal Beloit Corporation or one of its affiliated companies.
©2018 Regal Beloit Corporation, All Rights Reserved. MC017097E

REGAL[®]



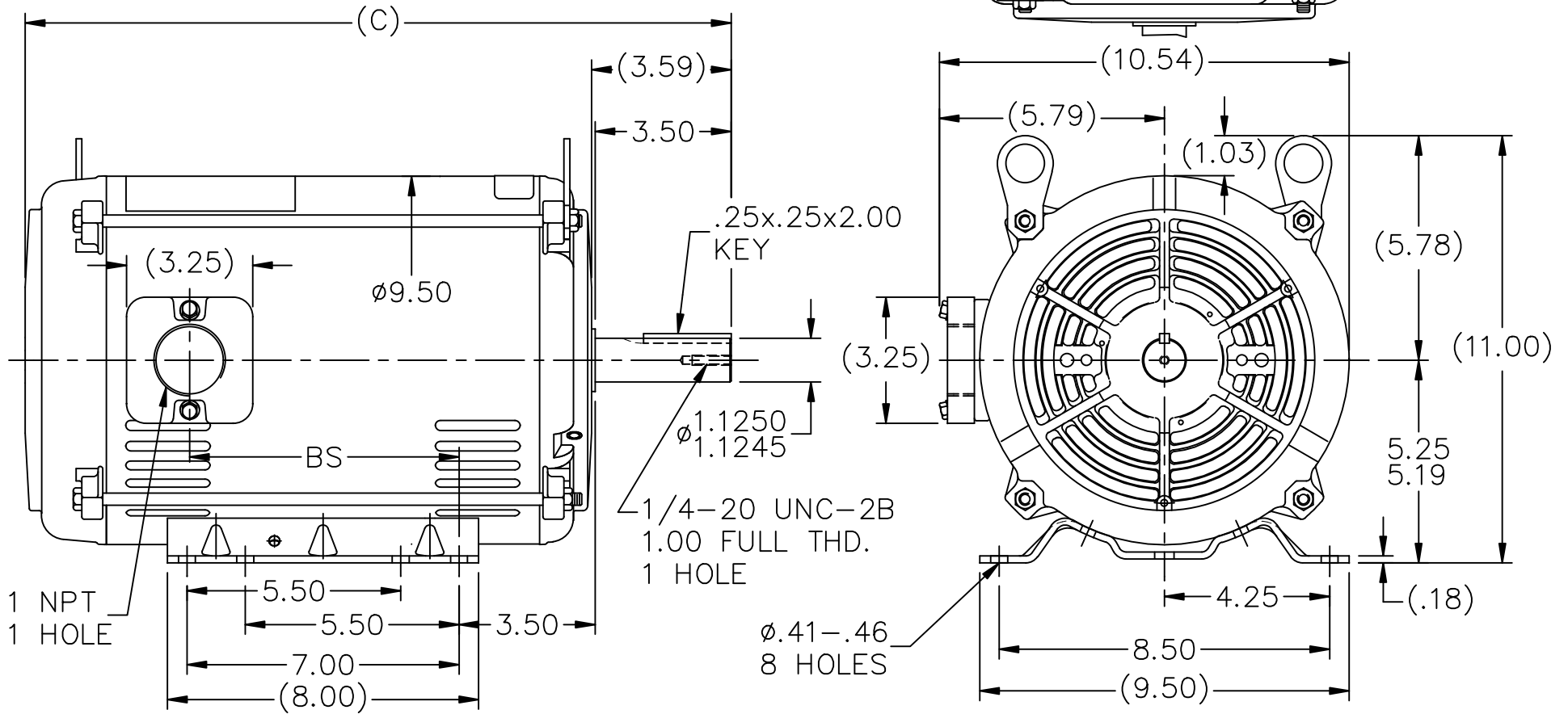
Nameplate Specifications

Output HP	10 Hp	Output KW	7.5 kW
Frequency	60 Hz	Voltage	230 V
Current	46.0 A	Speed	3495 rpm
Service Factor	1.5	Phase	1
Efficiency	82.5 %	Duty	Continuous
Insulation Class	F	Design Code	NO DESIGN CODE
KVA Code	G	Frame	215TZ
Enclosure	Drip Proof Air Over	Overload Protector	No
Ambient Temperature	40 °C	Drive End Bearing Size	6307
Opp Drive End Bearing Size	6206	UL	Recognized
CSA	Y	CE	N
IP Code	22		

Technical Specifications

Electrical Type	Capacitor Start Induction Run	Starting Method	Across The Line
Poles	2	Rotation	Selective Counterclockwise
Mounting	Rigid base	Motor Orientation	Horizontal
Drive End Bearing	Ball	Opp Drive End Bearing	Ball
Frame Material	Rolled Steel	Shaft Type	Single Special Extension
Overall Length	18.16 in	Frame Length	11.15 in
Shaft Diameter	1.125 in	Shaft Extension	3.59 in
Assembly/Box Mounting	F1 Only		
Outline Drawing	A-SS86663-1115	Connection Diagram	A-EE7090JM

This is an uncontrolled document once printed or downloaded and is subject to change without notice. Date Created: 06/29/2018

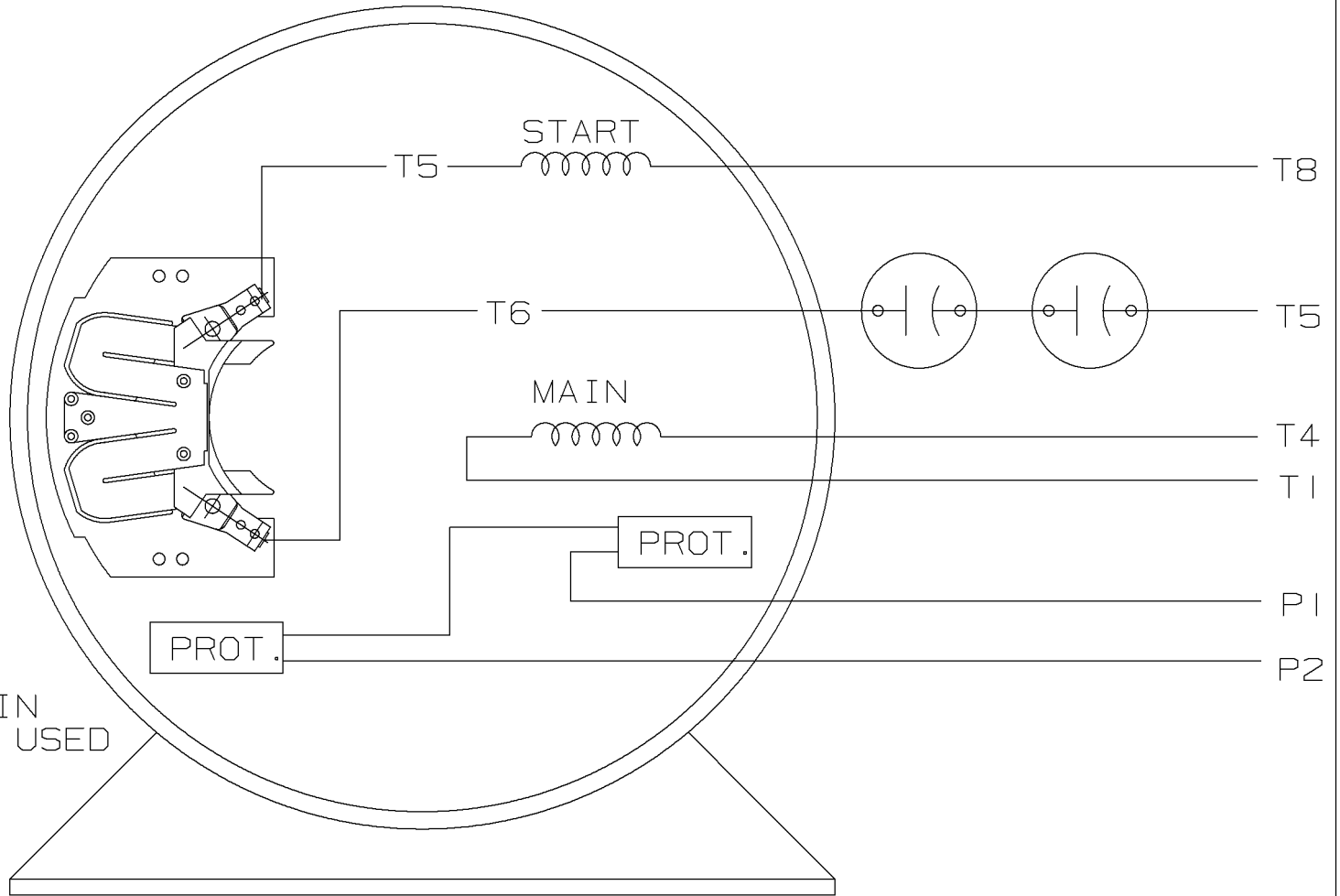
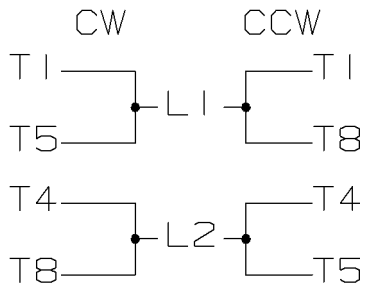


DASH	FR.	C	BS
965	213T	16.66	5.43
1115	213/15T	18.16	6.93
1240	213/15T	19.41	8.18

NOTES:
 1. NAMEPLATE TO BE READ FROM LEAD EXIT SIDE OF MOTOR.
 2. SEE MODEL FOR LEAD LENGTH.

			TOLERANCES UNLESS SPECIFIED			DRAWN MH 03-17-1997			
			DEC.	INCHES		CHK ML 03-19-1997			
4	UPDATED DRAWING	TJW 04/30/2007	.X	$\pm .1$	TITLE OUTLINE 210T FR.-BB-SS-DR.PR.-SINGLE PHASE	APPD DN 03-19-1997	SCALE 1=4		
3	REDRAWN IN AUTOCAD	TAT 06-13-2005	ML	$\pm .03$		REF			
2	REMOVED MOUNTING AND NOTE 3	DRS 10-09-2001		.XXX $\pm .005$	MAT'L.	FMF			
1	NEW DRAWING	MH 03-19-1997		.XXXX $\pm .0005$	FINISH	PREV			
NO.	REVISION	BY & DATE	CHK	ANG					
THIS DRAWING IN DESIGN AND DETAIL IS OUR PROPERTY AND MUST NOT BE USED EXCEPT IN CONNECTION WITH OUR WORK ALL RIGHTS OF DESIGN AND INVENTION ARE RESERVED THIS IS AN ELECTRONICALLY GENERATED DOCUMENT - DO NOT SCALE THIS PRINT			RFP		CAD FILE ss86663	SIZE A	DRAWING NO. SS86663	PAGE OF	REV. 4
			DIST LB						

SINGLE VOLTAGE CAPACITOR START MOTOR, ELECTRICALLY REVERSIBLE



CONNECT PROTECTORS IN SERIES WHEN TWO ARE USED

VIEW OF TERMINAL END

				<input checked="" type="checkbox"/> MAX. SURFACE ROUGHNESS UNLESS NOTED OTHERWISE UNLESS OTHERWISE SPECIFIED DIMENSIONS ARE IN INCHES TOL. ON XX±.02 XXX±.005 XXXX±.0005 ANGLES± 7'30"		
			MATL SPEC	180 - 210 SWITCH	DRAWN BY GK	01-10-1987
			FINISH	MARATHON ELECTRIC WAUSAU, WISCONSIN 54401	CHKD BY	
1	01-10-1987	NEW DRAWING	CN-7664C		GK	APPD BY
REV	DATE	CHANGE	NAME	PART NAME CONNECTION DIAGRAM	DRWG NO A-EE7090JM	

SHOP BOOK

PURCHASED

DISTRIBUTION - WA - LB - WP - LM - BR

CADD FILE NO.

EE7090JM

```
ERROR: syntaxerror  
OFFENDING COMMAND: --nostringval--
```

```
STACK:
```

```
 /im  
-savelevel-
```


** Subject to change without notice.